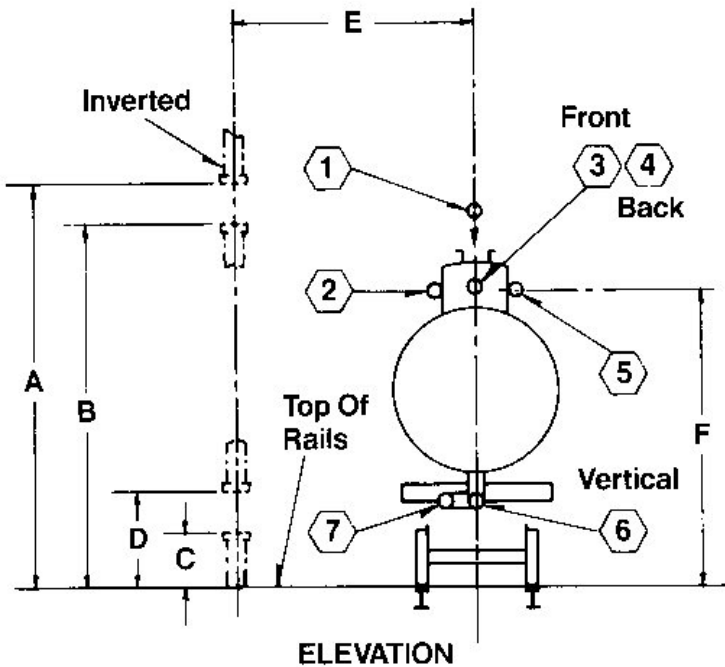
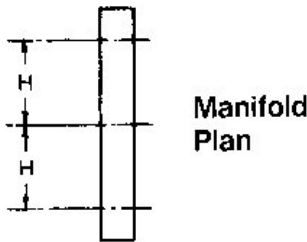
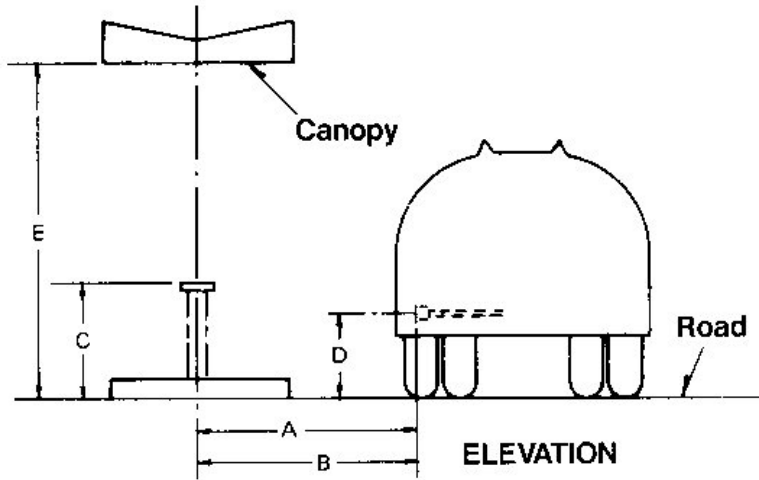


CONNEX SVT

Tank Truck Bottom Loading



Front Of Car Toward Viewer

(4 Ft. Total Spotting Tolerance Will Be Allowed Unless Specified)

Loader Size Product _____
 Product(s) to be handled:
 1. _____
 2. _____
 3. _____
 4. _____
 5. _____

Pressure: Max. _____ Min. _____
 Temp: Max _____ Min. _____
 Flow Rate _____ SG _____ Vis _____

Dimensions from sketch at left are:

(A) Reach: Maximum _____
 (B) Reach: Minimum _____
 (C) Riser Height _____
 (D) Truck Connection Height _____
 (E) Headroom _____

To be used: One Side Both Sides

If more than one component is to be loaded, fill out the following:

(F) Number of Compartments _____
 (H) Spacing Between Connections _____
 (I) Truck Connections Type _____

Railroad Tank Car Loading And Unloading Field Data

Loader Size _____ Vapor _____
 Pressure in Loader: Positive _____ Negative _____
 Products to be handled _____

 Temperature: Max. _____ Min. _____
 Flow Rate _____ SG _____ Vis _____

Type of Connection on Car _____
 Connections to be made at the following point(s):
 (Indicate number from sketch at left)
 Dimensions shown on sketch at left are:
 (A) Inverted (Drop Feed) High _____
 (B) Riser (High) _____
 (C) Riser (Low) _____
 (D) Inverted (Drop Feed) Low _____
 (E) Centers (Riser to Tank Car) _____
 (F) Connection Height _____
 (G) Riser to Centerline Stairs _____

Customer Preferences (If Any)

Loader Type: Catalog Number _____
 Materials To Be Used:
 Metals: _____
 Seals: _____
 Drop Tube Length (Centerline to End) _____

Accessories/Comments:

Your Name _____
 Company _____
 Phone _____ Email _____

Fill out the above form with as much information as possible and fax back to us at (281) 578-8364